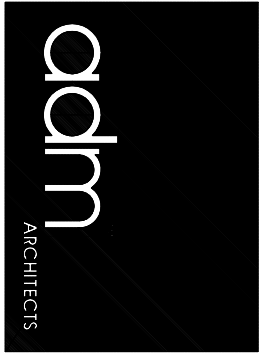
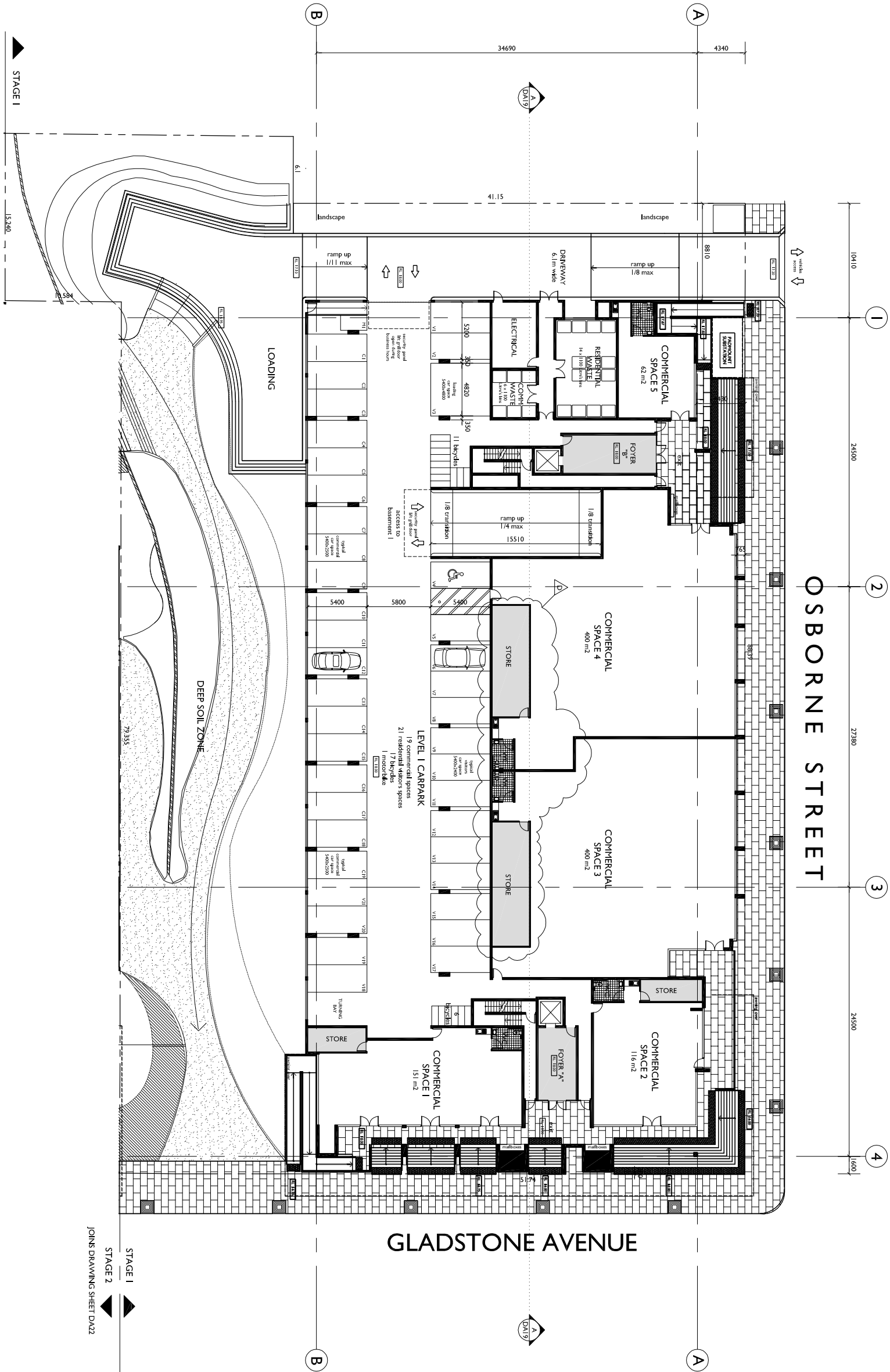


a COPYRIGHT These drawings remain the exclusive copyright of ADM Architects. No part of these drawings may be reproduced, stored in a retrieval system, or transmitted in any form or by any means, electronic, mechanical, photocopying, recording, or by any information storage and retrieval system, without the prior written permission of ADM Architects. Holders of these drawings require proof evidenced in writing that ADM Architects has granted them permission to use these drawings. Any use of these drawings without the prior written permission of ADM Architects is a breach of the Copyright Act and becomes liable accordingly. a FIGURED DIMENSIONS: These drawings are not to be scaled. Figured dimensions shall be used in all cases. ADM Architects is a registered Architect for ADM Projects (Australia) Pty Ltd T/A ADM Architects is Angelo Di Martino ABB No. 7408

ISSUE	DATE	DESCRIPTION
A	19.10.10	ISSUED FOR DA
B	09.22.10	RE- ISSUED FOR DA
C	30.03.11	AMENDED FOR DA
D	06.05.11	COMMERCIAL SPACES AMENDED FOR DA APPROVAL

NOT FOR CONSTRUCTION



94 Kentia St, Wollongong NSW 2500 PO Box 3041 Wollongong
 ph: 02 4228 6400 fax: 02 4228 6455 www.admarchitects.com.au

Project
 PROPOSED MIXED USE DEVELOPMENT
 STAGE 1-COMPRISING 105 APARTMENTS OVER
 COMMERCIAL SPACE AND BASEMENT PARKING
 STAGE 2 -COMPRISING 102 APARTMENTS OVER
 COMMERCIAL SPACE AND BASEMENT PARKING
 At
 LOTS 37-42 D P 10704, LOTS 1 & 2 D.P 395582
 LOT A D.P 411527 , LOT A D.P 340379
 LOT C D.P 348551
 GLADSTONE AVENUE, OSBORNE STREET &
 ROWLAND AVENUE WOLLONGONG

For
 NICOLAS DAOUD PTY. LTD.

Title	
DEVELOPMENT APPLICATION	
STAGE 1	
LEVEL 1 FLOOR PLAN	

Scale	Date	
1:200@ A1 1:400@ A3	MARCH 2011	
Drawn	Checked	
LD / D.F	ADM	
Project No.	Drawing No.	Issue
2009-30	DA04	D

COPYRIGHT OF adm architects

LEVEL 1 GROUND FLOOR PLAN - BLOCKS A & B

LEVEL 1 RL 18.000



STAGE 1
 STAGE 2
 JOINS DRAWING SHEET DA22